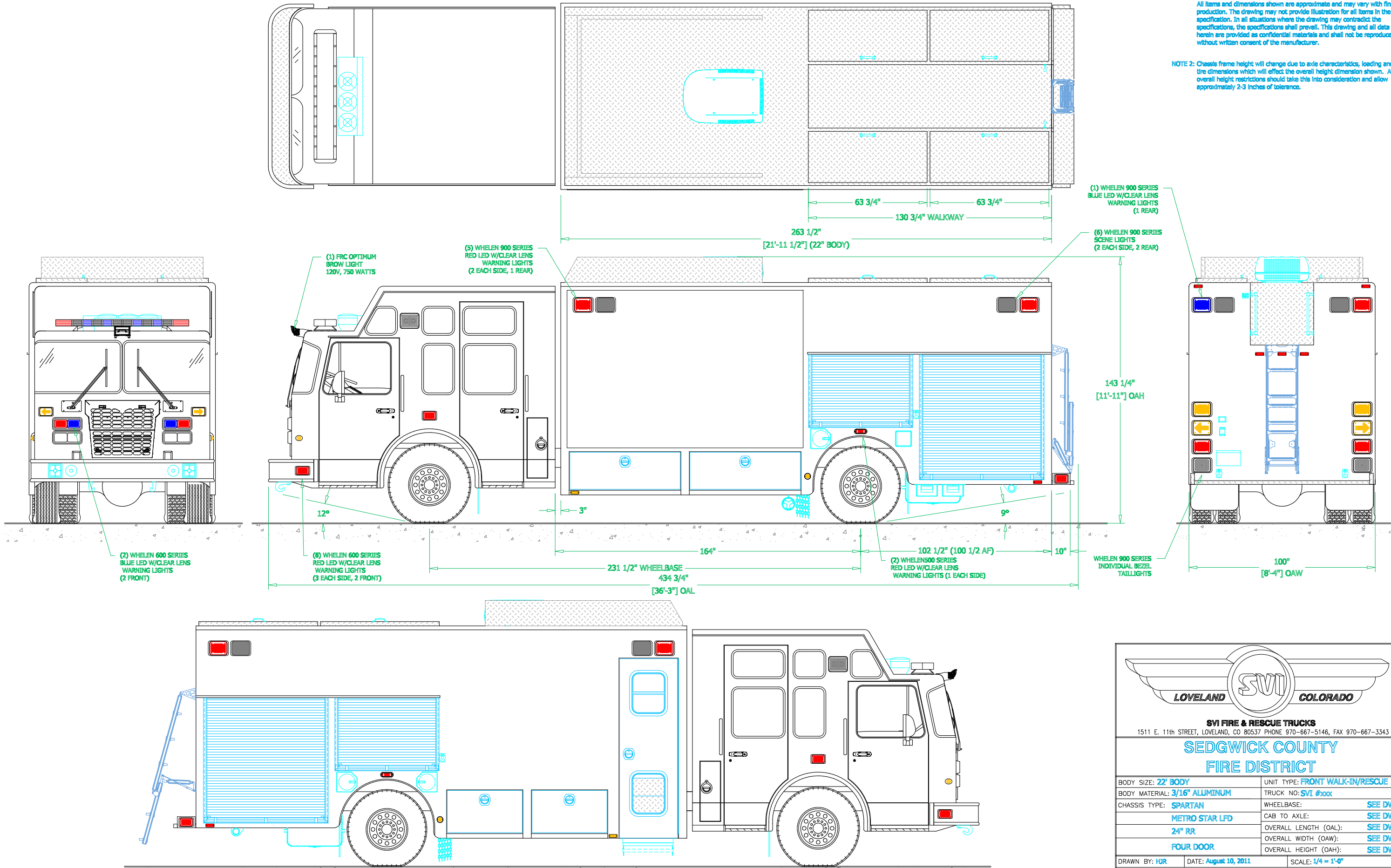


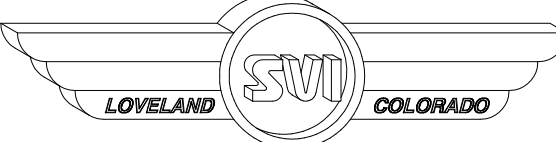
BID DRAWING

REVISIONS			
REV	DESCRIPTION	DATE	BY

NOTE 1: Do not scale drawing. This drawing is for general truck configuration only. All items and dimensions shown are approximate and may vary with final production. The drawing may not provide illustration for all items in the specification. In all situations where the drawing may contradict the specifications, the specifications shall prevail. This drawing and all data herein are provided as confidential materials and shall not be reproduced without written consent of the manufacturer.

NOTE 2: Chassis frame height will change due to axle characteristics, loading and tire dimensions which will effect the overall height dimension shown. Any overall height restrictions should take this into consideration and allow approximately 2-3 inches of tolerance.





LOVELAND SVI COLORADO

SVI FIRE & RESCUE TRUCKS

1511 E. 11th STREET, LOVELAND, CO 80537 PHONE 970-667-5146, FAX 970-667-3343

SEDGWICK COUNTY

FIRE DISTRICT

BODY SIZE: 22' BODY	UNIT TYPE: FRONT WALK-IN/RESCUE
BODY MATERIAL: 3/16" ALUMINUM	TRUCK NO: SVI #100X
CHASSIS TYPE: SPARTAN	WHEELBASE: SEE DWG
METRO STAR LFD	CAB TO AXLE: SEE DWG
24" RR	OVERALL LENGTH (OAL): SEE DWG
FOUR DOOR	OVERALL WIDTH (OAW): SEE DWG
	OVERALL HEIGHT (OAH): SEE DWG

DRAWN BY: **HJR**

DRAWING NO: **Sedgwick_CS_HZ_Prelim3**

DATE: **August 10, 2011**

SCALE: **1/4" = 1'-0"**

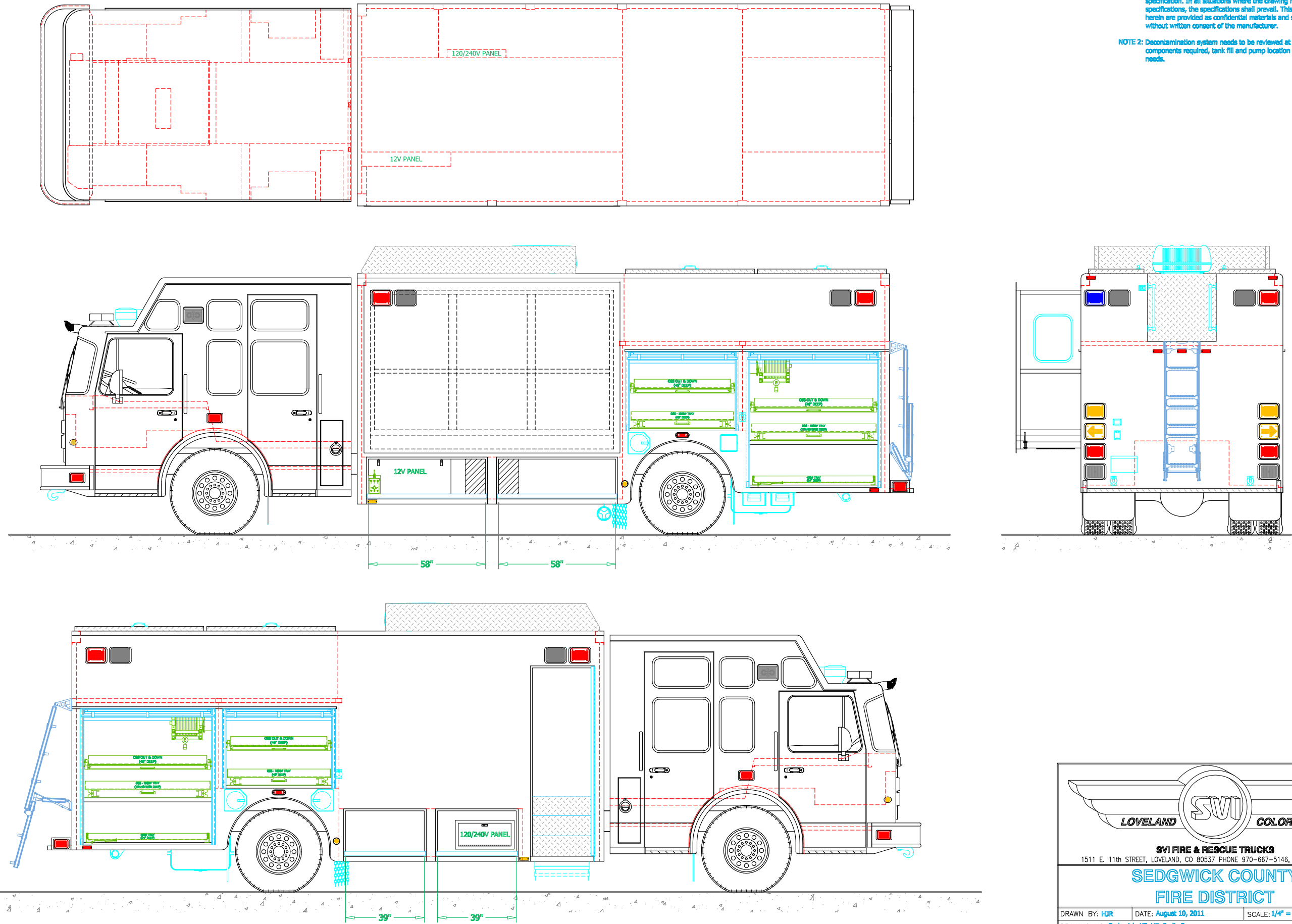
SHEET **1** OF **3**

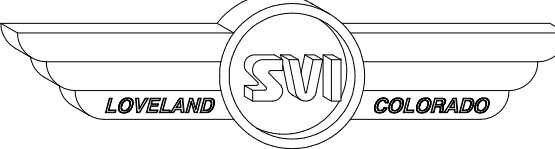
BID DRAWING

REVISIONS			
REV	DESCRIPTION	DATE	BY

NOTE 1: Do not scale drawing. This drawing is for general truck configuration only. All items and dimensions shown are approximate and may vary with final production. The drawing may not provide illustration for all items in the specification. In all situations where the drawing may contradict the specifications, the specifications shall prevail. This drawing and all data herein are provided as confidential materials and shall not be reproduced without written consent of the manufacturer.

NOTE 2: Decontamination system needs to be reviewed at pre-con meeting for components required, tank fill and pump location per fire department needs.





LOVELAND SVI COLORADO

SVI FIRE & RESCUE TRUCKS

1511 E. 11th STREET, LOVELAND, CO 80537 PHONE 970-667-5146, FAX 970-667-3343

SEDGWICK COUNTY

FIRE DISTRICT

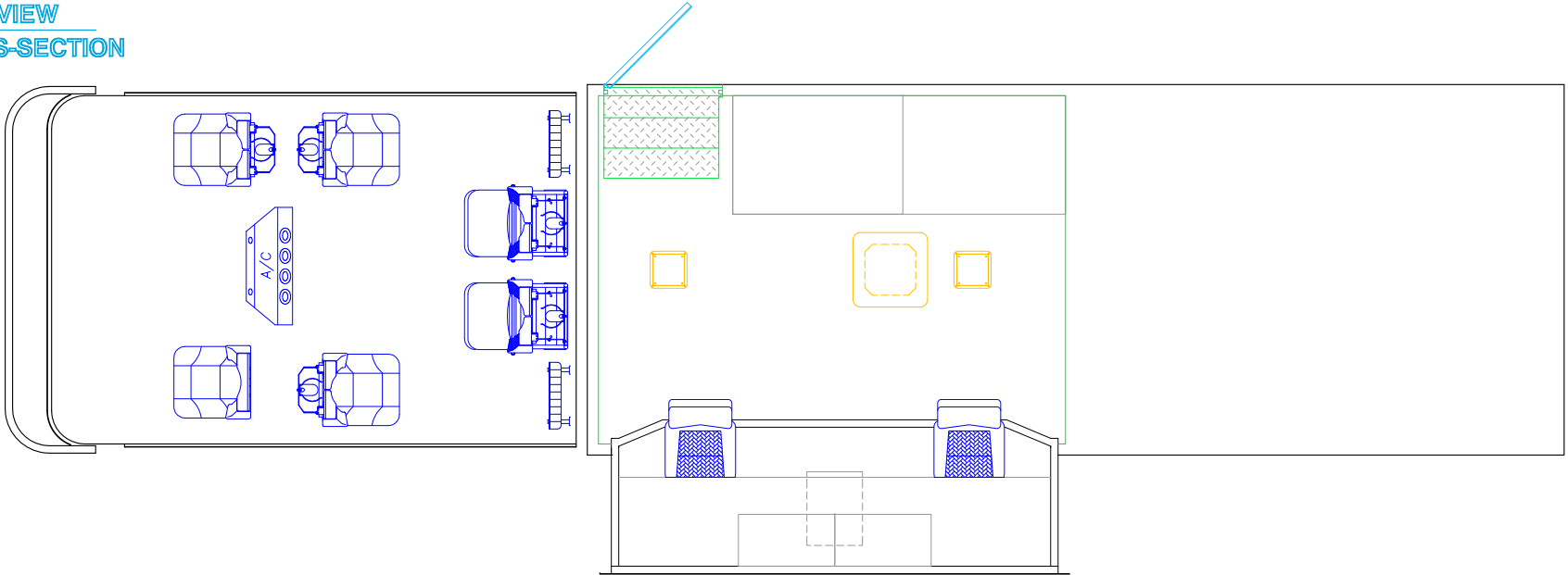
DRAWN BY: HDR	DATE: August 10, 2011	SCALE: 1/4" = 1'-0"
DRAWING NO: Sedgwick_JS_HZ_Prelim3		SHEET 2 OF 3

BID DRAWING

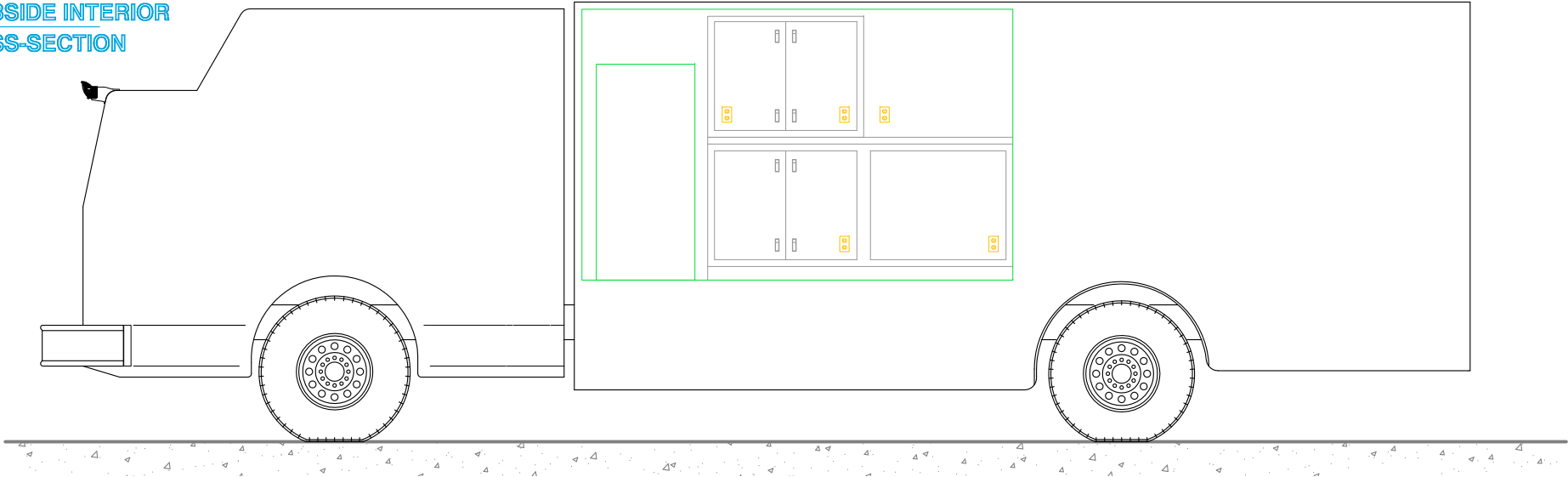
REVISIONS			
REV	DESCRIPTION	DATE	BY

NOTE 1: Do not scale drawing. This drawing is for general truck configuration only. All items and dimensions shown are approximate and may vary with final production. The drawing may not provide illustration for all items in the specification. In all situations where the drawing may contradict the specifications, the specifications shall prevail. This drawing and all data herein are provided as confidential materials and shall not be reproduced without written consent of the manufacturer.

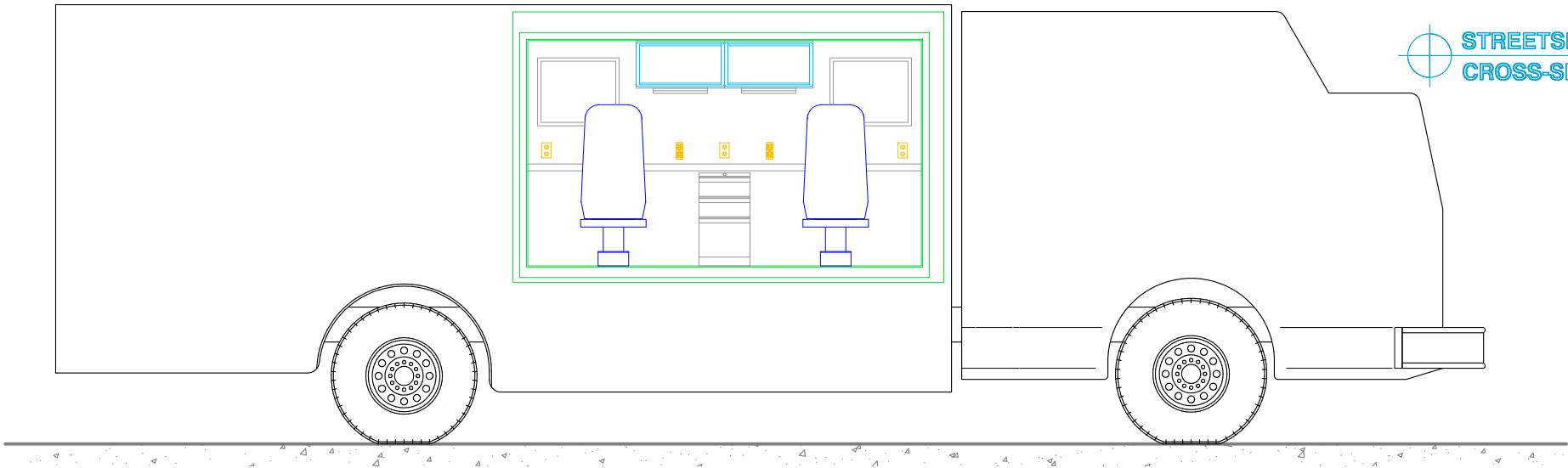
PLAN VIEW
CROSS-SECTION




CURBSIDE INTERIOR
CROSS-SECTION



STREETSIDE INTERIOR
CROSS-SECTION





LOVELAND SVI COLORADO

SVI FIRE & RESCUE TRUCKS

1511 E. 11th STREET, LOVELAND, CO 80537 PHONE 970-667-5146, FAX 970-667-3343

SEDGWICK COUNTY

FIRE DISTRICT

DRAWN BY: HDR	DATE: August 10, 2011	SCALE: 1/4" = 1'-0"
DRAWING NO: Sedgwick_JS_HZ_Prelim3		SHEET 3 OF 3