



**MaxFire**  
FireFighting Solutions



## Max Fire Apparatus Announced as the Braun Ambulance Dealer for Colorado and Wyoming

Jim Biedenharn, Vice President of Braun Ambulances is pleased to announce Max Fire Apparatus, Inc., Castle Rock, CO, as the authorized dealer for Colorado and Wyoming, effective January 14, 2007.

We're excited to add Braun Ambulances to our family of leading brands of emergency and rescue vehicles. Braun's reputation for innovation and quality fits very well with our Rosenbauer brand of fire apparatus, and with the addition of Braun, we're now able to offer our customers a full line of fire and emergency vehicles, said Floyd Bacon, President of Max Fire Apparatus.

Braun Ambulances, based in Van Wert, OH, is a leading manufacturer of custom built ambulances in North America. Since 1972, Braun handcrafted ambulances has built a growing list of loyal customers, including: Weld County CO EMS, Telluride CO Fire Protection District, Limon CO EMS, City of Boston EMS, City of Chicago Fire Department, Lexington KY Fire Department, and Miami-Dade Fire-Rescue to name a few.

For more information on Braun handcrafted ambulances, please contact Max Fire Apparatus at 303-814-8746, [info@maxfire.com](mailto:info@maxfire.com) or visit our web site at [www.maxfire.com](http://www.maxfire.com).



Max Fire Apparatus Inc.  
P.O. Box 1658  
Castle Rock, CO 80104  
Phone: 303-814-8746 Fax: 303-814-8697  
E-mail: [info@maxfire.com](mailto:info@maxfire.com)  
[www.maxfire.com](http://www.maxfire.com)

## NEW DELIVERIES



Cortez Fire Protection District  
Rosenbauer/General Safety Rear Mount Pumper

Spartan Advantage low-profile 4x4 chassis, Cummins ISL 400 engine, Rosenbauer NH 1250 GPM pump with pump & roll capability, 750 gallon water tank / 30 gallon foam cell, Rosenbauer Max CAFS and Fix Mix Foam system, Hart-A-Gen 6kw hydraulic generator, Super Vac 3000 watt light tower, Akron Fire Fox bumper turret, ground sweep nozzles, truck protection sprinkler system.



Del Norte Fire Protection District  
Rosenbauer/Central States 3000 Gallon Tender

Kenworth T-300 chassis, Cummins ISC 330 engine, Darley 750 GPM PTO pump, 3000 gallon water tank, pre-piped deck gun, 10" rear dump valve, 3500 gallon folding tank storage, Weldon 12 volt scene lighting.



Telluride Fire Protection District  
Rosenbauer/General Safety Rear Mount Pumper

Spartan Advantage low-profile 4x4 chassis, Cummins ISL 400 engine, Waterous 1500 GPM pump, 750 gallon water tank / 30 gallon foam cell, Foam Pro 2001, Akron Sabermaster electric deck gun, Onan 10kw hydraulic generator, Super Vac 3900 watt light tower, electric cord reel, Code 3 LED warning lights, Rosenbauer's exclusive Safe Steps.



Teton Village Fire District  
Rosenbauer/Central States Pumper

Spartan Advantage low-profile 4x4 chassis, Cummins ISL 400 engine, Waterous 1500 GPM pump, 750 gallon water tank / 30 gallon foam cell, Foam Pro 2002 system, hydraulic ladder rack, Hart-A-Gen 6kw hydraulic generator, FRC 750 watt scene lighting.



# TIMBERWOLF INTERFACE PUMPERS AVAILABLE FOR QUICK DELIVERY

Max Fire Apparatus and Rosenbauer have a limited number of Timberwolf Interface pumpers equipped with 2006 EPA compliant engines available for quick delivery.



For more information, please contact Floyd Bacon or Wayne Stevens at 303-814-8746, or e-mail [info@maxfire.com](mailto:info@maxfire.com).

<b>Chassis</b>	International 7400 4-door 4x4
<b>Engine</b>	310HP—2006 EPA Compliant
<b>Water tank</b>	600 gallons
<b>Foam Cell</b>	30 gallons
<b>Pump</b>	Rosenbauer NH 1000 Pump & roll
<b>Pump Capacities</b>	1000 GPM @ 150 PSI 100 GPM @ 600 PSI
<b>Body Material</b>	Extruded Aluminum 20 year warranty
<b>Foam Systems</b>	Rosenbauer Fix Mix Foam Pro 2001
<b>Options</b>	Bumper Turret Ground Sweep Nozzles Booster Reel

## PRE-OWNED APPARATUS



### 2003 Rosenbauer 100' Mid Mount Platform

Spartan Gladiator chassis, Cummins ISM 450hp engine, Allison HD-4060 transmission, heavy duty extruded aluminum body, Hale 1500 GPM pump, 300 gallon water tank, front intake, Onan 15kw hydraulic generator, Whelen emergency lighting.

**Available for immediate delivery.  
Call Floyd Bacon or Wayne Stevens at  
(303) 814-8746 for more information.**



### 2003 Rosenbauer 75' Quint

Spartan Gladiator chassis, Cummins ISM 450hp engine, Allison HD4060 transmission, heavy duty extruded aluminum body, Hale 1500 GPM pump, 300 gallon water tank, front intake, Onan 15kw hydraulic generator, Whelen emergency lighting.

**Available for immediate delivery.  
Call Floyd Bacon or Wayne Stevens at  
(303)814-8746 for more information.**

Pre-owned apparatus subject to prior sale.

# EQUIPMENT SPECIALS

## MaxFire's 3200 Ultra® Structural Turnout Gear System

Introducing MaxFire's latest turnout system featuring groundbreaking technology and the ultimate design to protect firefighters against today's toughest challenges.

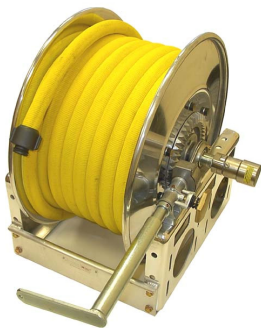
The 3200Ultra has been developed utilizing the latest research on ergonomics in personnel protective clothing and developed the patented Trident™ system. This is a three-tier system designed for maximum multi-dimensional flexibility.

The 3200 Ultra jacket is the only firefighter jacket that incorporates expansion bellows in the underarms, elbow breaks, and an action back system. While most are flexible in only the arms or back, the 3200Ultra incorporates all three, enhancing overarm reach without exposing the midsection, and allowing greater upper arm rotation and reduced drag. The pants also incorporate the Trident™ system with knee breaks, expansion knees and a gusseted crotch.



Wildland, Recue/Extrication, EMS gear also available.

**From \$970**



Reel not included

## MaxFire's Boostlite Reel Hose

Boostlite is a lightweight, 1" diameter, polyurethane lined, non-collapsible, very kink resistant reel hose. Constructed of heavy duty spun yarn construction with yellow Permatek® treatment for higher abrasion resistance. Manufactured using patented Mertex® method giving superior lining adhesion, and lower friction loss.

**\$123**

## MaxFire Gloves

Shelby Specialty Gloves unveils the newest and most innovative addition to its quality lineup of firefighter gloves—the revolutionary Shelby FDP™ series. The FDP™ series glove with the Shelby barrier system, uses waterproof, breathable GORE™ technology to provide a look, feel, and performance different from any other glove used by the Fire Service today.

Structural, Wildland/Proximity, Extrication/Rescue gloves available.

**\$45**

Model 5228



*For Equipment Orders Call (303) 814-8746  
Northern Colorado/Wyoming: Daren Greening — [daren@maxfire.com](mailto:daren@maxfire.com)  
Southern Colorado: Mark Cowen — [mark@maxfire.com](mailto:mark@maxfire.com)  
Western Slope John Bennett — [john@maxfire.com](mailto:john@maxfire.com)*



# BRUSH TRUCKS

MaxFire's brush trucks are designed for quick response in the wildland/urban interface area and can be customized to meet your department's unique and individual needs. And depending on the options you chose, can be configured as either a Type 3 or 6 wildland apparatus.

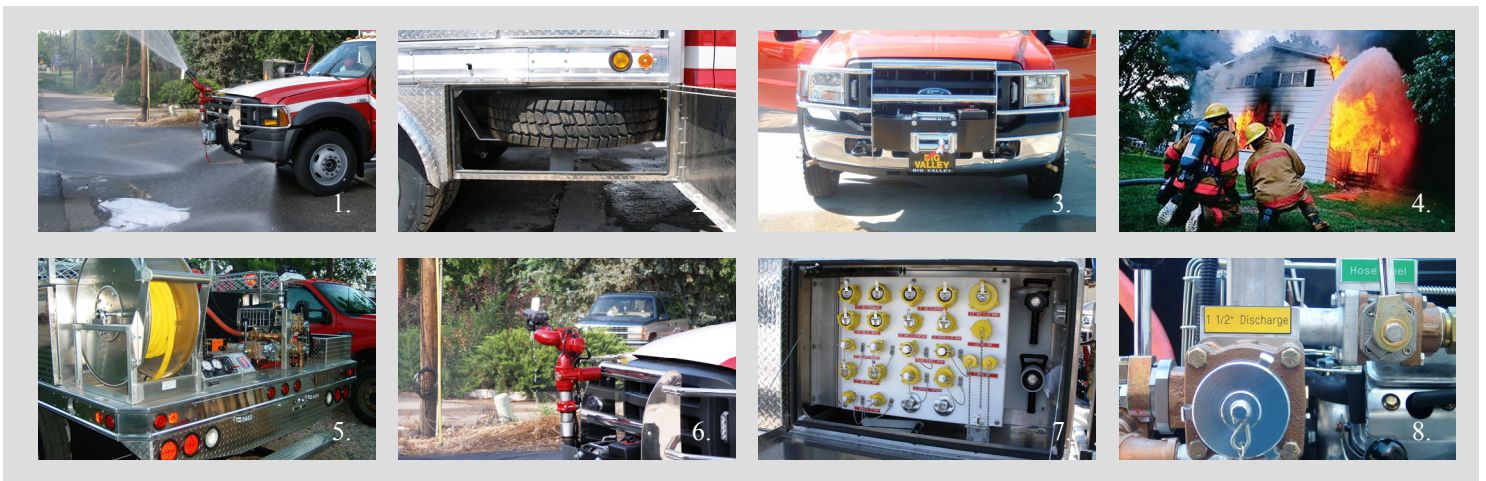
## Specifications

<b>Type</b>	Type 3/6
<b>Chassis</b>	Ford F-550 2 or 4 Wheel Drive Other Chassis Available Customer Supplied
<b>Water tank</b>	Poly—Up to 500 gallons
<b>Pumps</b>	Rosenbauer, Waterous, Darley, Hale,
<b>Pump Capacities</b>	95-500 GPM
<b>Flat Bed Material</b>	Extruded Aluminum
<b>Compartment Material</b>	Aluminum
<b>Foam Systems</b>	Rosenbauer, Foam Pro, Darley, Scotty, Blizzard Wizard,
<b>CAFS</b>	Waterous/Pneumax, Darley/Odin

MaxFire's brush trucks are constructed with corrosion free aluminum flatbeds and heavy duty extruded aluminum sub-frames for exceptional strength and durability. A rear-mounted pump, stainless steel plumbing, foam systems and water tank capacities up to 500 gallons make MaxFire's brush trucks the most versatile, easy to operate and affordable brush trucks available.

Standard features include stainless steel plumbing, color-coded and labeled electrical wiring, booster reel, LED lower level warning lights, under body and compartment lighting. Each Max-Fire brush truck can be customized to meet your needs: add your choice of pump (up to 500 GPM), water tank size, foam system, bumper turret, ground sweep nozzles and more.

## Popular Options



1. Ground Sweep Nozzles 2. Spare Tire Carrier 3. Brush Guard/Winch 4. Compressed Air Foam System (CAFS)  
5. Booster Reel 6. Bumper Turret 7. Custom Equipment Mounting 8. Stainless Steel Plumbing/Color Coded Labels

# EQUIPMENT SPECIALS



## MaxFire Traditional Firefighting Helmets

The MaxFire traditional helmet combines the classic American firefighting helmet style with state-of-the-art safety and performance features you have come to expect from MaxFire.

---

**\$189**

---

1910 Traditional Freedom

## Multi-Gas Detector

Take fireground safety to new heights with the Pilot, the finest value in portable four (4) gas detectors, featuring the power of Instant Ready™ and pre-calibrated sensor pack.

---

**\$575**

---

AIM Pilot



MaxFire  
PO Box 1658  
Castle Rock, CO 80104

